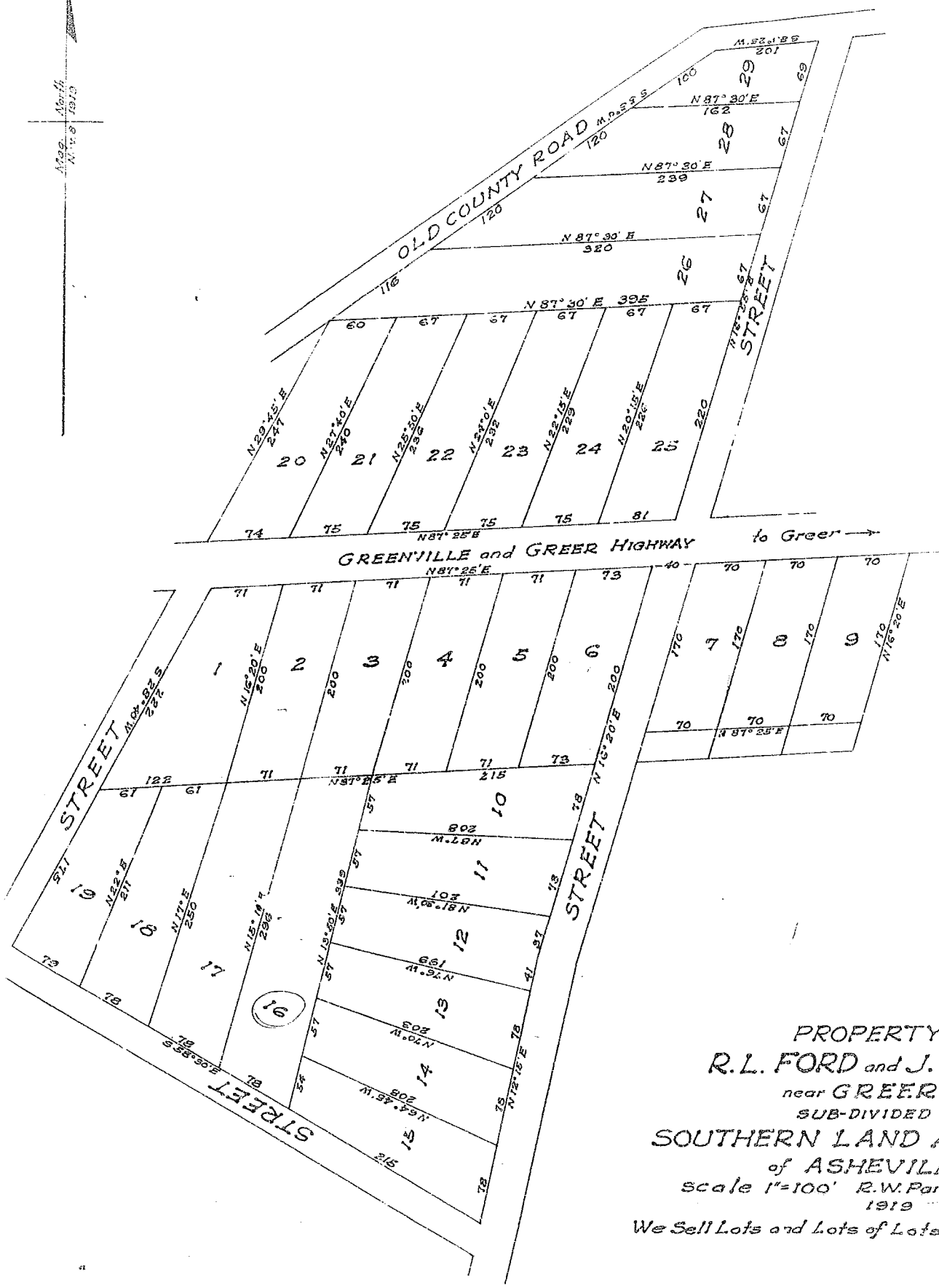


Mag. North  
N 1/4 S 7812



PROPERTY OF  
**R. L. FORD and J. T. SMITH**  
near GREER, S.C.  
SUB-DIVIDED BY  
**SOUTHERN LAND AUCTION CO.**  
of ASHEVILLE, N.C.  
scale 1"=100' R.W.Parker, Engr.  
1919  
We Sell Lots and Lots of Lots and Farms. My/My!

Recorded July 1, 1924 by Kay. Bee.

**BAD COPY**